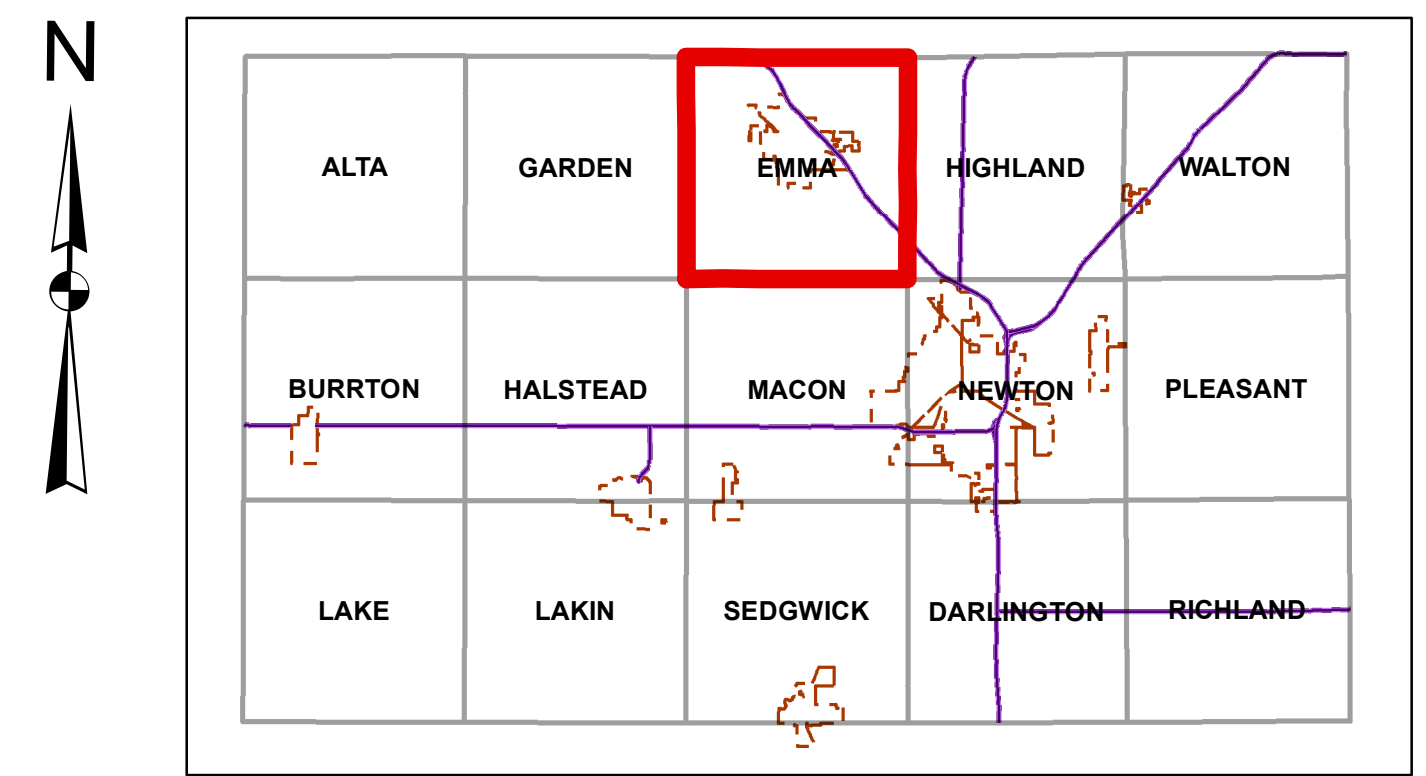
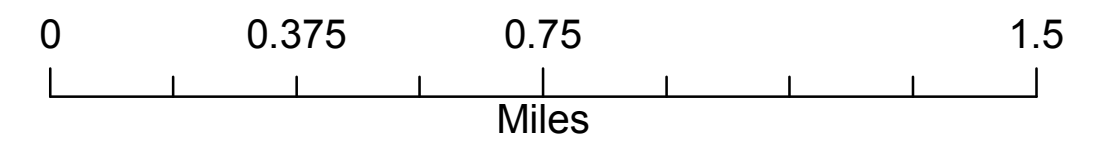


Emma Township

T22-R1W

DATE: 01/17/2014
Harvey County R & B and GIS

The information contained herein represents that information contained in official records. Any conclusions drawn from such information will be drawn at the sole risk of the user. The use of the data contained herein, and any products derived therefrom, for the purpose of solicitation to buy or sell any product, property or service is strictly prohibited.



| Legend | | Townships | Property |
|--------|------------------------------------|-----------|-----------------|
| | US Interstate I-135 | | GARDEN |
| | US Route 50 | | HALSTEAD |
| | KS Routes | | MACON |
| | Paved Road | | NEWTON |
| | Unpaved Road | | |
| | Flood Prone | | |
| | Sand Hill Road | | |
| | HV Maintained - Unpaved | | |
| | HV Maintained - Paved/Hard Surface | | |
| | Bridge | | |
| | Bridge Closed | | |
| | Railroad Tracks | | |
| | Rivers, Streams & Creeks | | |
| | Lakes | | |
| | Section Number | | |
| | City Limits | | |
| | | | HV County Owned |
| | | | Unincorporated |
| | | | Golf Course |

